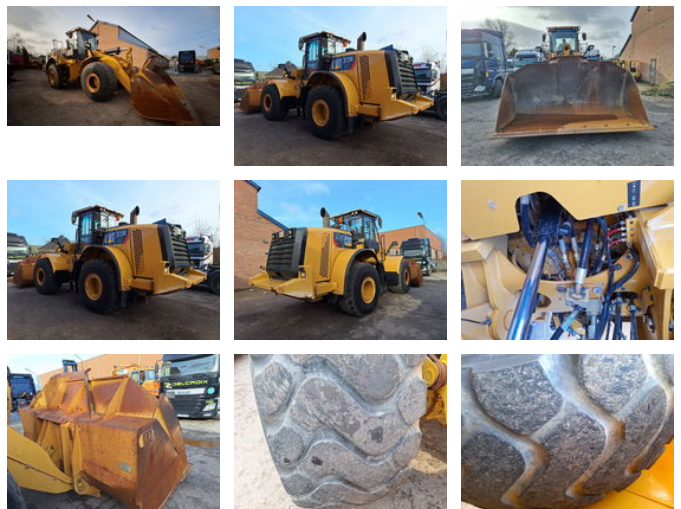




Caterpillar 972M Met EPA

General features

Brand	Caterpillar
Subcategory	Wheel loader
Construction year	2015
Hourmeter reading	10348
Condition	Used
General condition	Good
Fuel	Diesel



Characteristics

Empty weight

24.900kg

Serial number

CAT0972MJPR00499

Caterpillar 972M Met EPA

Technical specifications

Drive

wheels

Description

It has been fully serviced at Caterpillar technical inspection is present. This machine has EPA, label should be on top of engine block.
Stage = Tier 4 Final.

Accessories