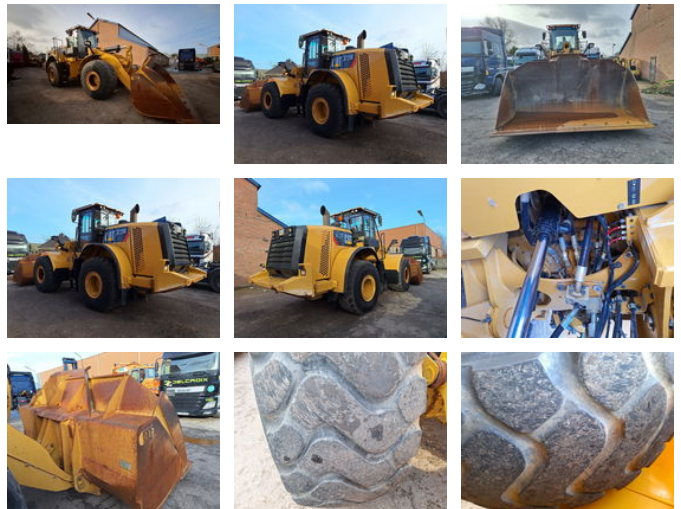




## Caterpillar 972M Met EPA

### General features

Brand	Caterpillar
Subcategory	Wheel loader
Construction year	2015
operatingHours	10348
Condition	Used
General condition	Good
Fuel	Diesel



### Characteristics

Empty weight	24.900kg
Serial number	CAT0972MJJPR00499

# Caterpillar 972M Met EPA

## Technical specifications

transportationPropulsion

wheels

## Description

It has been fully serviced at Caterpillar technical inspection is present. This machine has EPA, label should be on top of engine block.  
Stage = Tier 4 Final.

## Accessories